

# Excalibur



The Inland  
Waterways  
Association

THE LONDON NEWSLETTER  
OF THE I. W. A.

NUMBER 41, AUTUMN 2004

**EDITOR : Mike Stevens, 333 Lyham Road, London SW2 5NS**  
phone (020) 8674 9387    mobile 07850-665102    e-mail michael.stevens@which.net  
**Region web site : [www.waterways.org.uk/london.htm](http://www.waterways.org.uk/london.htm)**



*Narrowboats President & Kildare at Limehouse Basin in May, with some of the boats who were about to escort them up the tideway to Brentford.*

*See the story on page 8.*

*Photo by Mike Stevens*

# WHO'S WHO IN LONDON IWA

## LONDON REGION

**President** Iltyd Harrington JP, DL

### Vice-Presidents

Dr Michael Essex-Lopresti  
Arthur Farrand Radley, MBE

### Chairman

Roger Squires (020) 7232 098  
e-mail : roger.squires@waterways.org.uk

### Secretary & Information Officer

Mike Stevens (See page 1 for details)

### Treasurer

Mike McHugh (work) (020) 8813 5200  
email : mike@dtl-broadcast.com

### Committee members

Libby Bradshaw (020) 8874 2787

Stu Carrie 07833 183500  
(Middlesex Branch Chairman)

Marion Riley 07958 505204  
(N&E London Branch Chair)

Colin Edwards (020) 8365 1348  
(Chairman of Plan/Nav Committee)

Robin Bishop (020) 8452 2632  
(Minutes Secretary)

### Official not on the Region Committee

Lewis Phillips 01227 712669  
(London Ring Plaques distribution)

## NORTH & EAST LONDON BRANCH

### Chair

Marion Riley 07958 505204  
email marion.riley@virgin.net

### Vice-chair

Tim Lewis (020) 8530 0425

### Secretary

Roger Wilkinson (020) 8458 9476  
2 Lytton Close, London N2 0RH  
email rogerw9796@yahoo.co.uk

### Treasurer

Ian Israel (020) 8446 1823  
email: p.israel@which.net

### Committee members

Colin Edwards (020) 8365 1348  
(Planning & Navigation)

Annie Chipchase 0777 3553623  
(Environment Officer)

Paola di Giancroce (020) 8986 4292  
(Events Officer)

Peter Nash 07958 505204  
(Social Secretary)

Ted Skelton (020) 8518 1903  
(Membership Officer)

**Three Mills Rally Co-ordinator** (non-Cttee)

Libby Bradshaw (020) 8874 2787

## MIDDLESEX BRANCH

### Chairman

Stu Carrie 07833 183500  
email : stuartcarrie@tiscali.co.uk

### Vice-Chairman & Treasurer

Mike McHugh work (020) 8813 5200  
email : mike@dtl-broadcast.com

### Secretary & Sales Officer

Robin Bishop (020) 8452 2632  
11 Lichfield Rd, Cricklewood, NW2 2RE  
email : robinebishop@tiscali.co.uk

### Committee members

John Ashley (020) 8572 0067  
(Plan-Nav rep)

Keith Clayton (020) 8573 0883  
(Membership Officer)

Mike Eade 01895 271595  
(Social Meetings Secretary)

Terry Liddle (020) 8863 2551  
(Newsletter Editor)

Jim Sitch (020) 8568 9659  
(Publicity Officer)

## SOUTH LONDON BRANCH

### Chairman & Publicity Officer

Mike Stevens (See page 1 for details)

### Deputy Chairman

Libby Bradshaw (020) 8874 2787

### Secretary & Social Secretary

Lesley Pryde 07787 360957  
2 Hepworth Road, SW16 5DQ  
e-mail cookielesley@tinyworld.co.uk

### Treasurer & Minutes Secretary

Dorothy Robbie (020) 8857 6367  
23 Porcupine Close, SE9 3AE.

### Committee members

Alan Eggby (020) 8764 8194  
(Sales Officer)

Andrew Mann (020) 8692 3637  
(Croydon Canal Campaign Co-ordinator  
& Membership Officer)

## Excalibur

### Editor

Mike Stevens See details on page 1.

### Editorial Assistant

Andrew Mann (020) 8692 3637  
43c Halesworth Road, SE13 7TJ  
e-mail : andremann.1@btinternet.com

### Advertising manager

Robin Bishop (020) 8452 2632  
11 Lichfield Rd, Cricklewood, NW2 2RE

# From the Editor

## Apologies for lateness

This issue of **Exca|ibur** should have been with you a while ago, but was delayed by the illness of our Editorial Assistant, Andrew, who I'm happy to report is now back in action.

## The future of Exca|ibur

This was the subject of some discussion at a recent Region Committee meeting, and our readers are invited to give us their opinions before we make up our minds what to do.

**Exca|ibur** was founded quite a few years ago by the former London Branch. When we were transformed into a Region with three branches we took the decision to retain the magazine as a Region venture as it appeared to us at that time that the Region, rather than any single Branch, had about the right size of membership and news base for a successful publication. More recent developments have caused us to wonder whether this is still true.

The capitation received by Regions and Branches from IWA Head Office is designed to fund communications with members, and may be claimed for up to four publications a year at either Branch or Region level.

Some time ago, Middlesex Branch voiced a desire to run their own newsletter alongside **Exca|ibur**, and the decision was taken to run a mixed economy of three issues per year of **Exca|ibur** together with one issue a year of Branch newsletters, all funded from capitation, with extra issues (if wanted) of branch newsletters funded from other sources.

Recently both Middlesex and N&E London Branches have found that they have no shortage of good material for their newsletters. I suspect that the only reason that South London hasn't made the same discovery is that, as its Publicity Officer, I've had my hands full with **Exca|ibur**. However, my experience has been that if I don't take care to prevent it, my own Branch could too easily dominate the space in **Exca|ibur**, so I

have no doubt that **Sarflund'n IWA News** would be a perfectly viable publication.

So your Region Committee is wondering whether the time has come to end our present mixed economy of publications and go for three regular Branch newsletters with the Region matters incorporated into each one.

There was a suggestion that we might vary our present scheme by changing from a pattern of 3 + 1 issues a year of **Exca|ibur** and Branch newsletters to a 2+2 pattern. Personally I feel that this would result in a situation when none of the publications involved would have any real sense of continuity.

Perhaps my own feeling is influenced by the fact that I have already announced my retirement from all my London IWA tasks at next year's AGMs, but I do think that the time may well have come to allow the branch newsletters to take over totally from **Exca|ibur** after our next issue.

But what do you, our members and readers think? Please make your views known to members of your Region Committee (listed on the opposite page). The next Region Committee meeting is on 23<sup>rd</sup> September.

Mike Stevens

---

## COPY DATE

No.42 New Year 2005 10 November

*The IWA may not agree with opinions expressed in this magazine but encourages publication as a matter of interest. Nothing printed may be construed as policy or an official announcement unless so stated, otherwise the Association accepts no liability for any matter in the magazine. Although every care is taken with advertising, no responsibility whatsoever can be accepted for any matter advertised.*

© IWA London Region 2004

Published by the Region at 3 Norfolk Court, Norfolk Road, Rickmansworth, WD3 1LT. Tel: (01923) 711114 Fax (01923) 897999

The Editor reserves the right to edit any article or letter submitted for publication.

# Weather extremes for Canalway Cavalcade



*This giant coot was made by one of the schools in the BW project and displayed on the BW workboat Python.*

*PHOTO : Mike Stevens*

This year's Canalway Cavalcade, over the May Day Bank Holiday weekend saw extremes of weather, with two bright, warm, sunny days on the Saturday and Sunday followed by the wettest Bank Holiday Monday that Canalway Cavalcade has ever seen. The public attendance followed the same pattern, with the Sunday probably being the busiest day we've ever had at the event, leading to an estimated 25,000 visitors during the whole weekend.

About 140 boats came this year, including the steamer nb *President* and its butt *Kildare*, which was one of the reasons why we chose as this year's theme *Steaming Ahead*. This also linked with the bicentenary of the first successful journey by steam power near Merthyr Tydfil. *President* and *Kildare* are owned by the Black Country Museum, whose Director, Ian Walden, opened the event.

The theme led to some interesting interpretations in the decoration of the boats, none more idiosyncratic than London WRG's *"Steaming a Head"*.

All the usual components of Canalway Cavalcade were there - the parades of boats (the rain stopped on Monday just in time for the parade of historic

boats), the Teddy Bears' Picnic and other children's activities (once again including a range of *Wild Over Waterways* activities) and jazz, morris dancing and the enhanced entertainments mentioned above.

One sad note was that this was the last year we'll enjoy a performance at Canalway Cavalcade by the Daystar Theatre Group, as they are about to give up touring the canals to go into other forms of theatre work. We shall miss Jane and Pete, who have been with us from the very early years of the event.

This year's beer tent was a distinct improvement on the last couple of years and did a flourishing trade, providing, as well as its day-time public service, an added attraction for the boaters in the evenings to come to that part of the site and support the Friday evening quiz and the Saturday evening Ceilidh.

This year, Canalway Cavalcade was preceded by the Paddington Waterside Festival, a series of corporate events organised by the Paddington Waterside Partnership, an organisation that links the various organisations involved in the developments around and near Paddington Basin. The partnership and some of its member



bodies gave generous sponsorship to our event, which enabled us to put on a more ambitious programme of music, entertainments and activities than in recent years, and also to give away our programme brochure in much larger numbers than we usually manage to sell.

We are grateful for this help, and especially for the brochure sponsorship from the Hilton Metropole Hotel. We are also grateful for the long-established support we receive from British Waterways and from the City of Westminster, and to everybody else who helped, in cash, in kind or in human effort, to make the event a success. Among our regular helpers for many years have been KESCRG, the Kent and East Sussex Canal Restoration Group, who provide our hard-working site crew. They have said that they plan taking a year off from this task next year. After their Herculean efforts for many years, they're certainly entitled to one - and they'll be a hard act to follow.

Already we have made a start on Canalway Cavalcade 2005, which as always will be at Little Venice over the May Day Bank Holiday weekend, Saturday 30<sup>th</sup> April to Monday 2<sup>nd</sup> May.

### AWARD WINNERS

THE MARCUS BOUDIER AWARD for the best privately-decorated boat :

Winner : nb *Gnashers II* (David Pearce)

2<sup>nd</sup>: nb *Pajant* (Paul & Janine Strudwick)

3<sup>rd</sup>: nb *Chérie* (Eric & Sally Naylor)

THE CRUISE ELECTRIC TROPHY for the best-illuminated boat :

Winner : nb *Theo* (Tideway Adventurers)

2nd : nb *Snug One* (Ray Rudge)

3rd : tug *Bantam IV* (London Canal Museum)

THE GRAHAM CAPELIN TROPHY for the best performance in either of the above by a boat entering for the first time

without winning either: nb *Snug One* (Ray Rudge).

THE BUCKBY CAN TROPHY for the best decoration of a boat by a community group or society :

Winner: nb *Hartley Harlequin* (The Church Army)

2<sup>nd</sup>: nb *Fulbourne* (London WRG)

THE WESTMINSTER TROPHY for the boat-handling competition :

Winner : Paul Garner, nb *Kelly Ann II*

2<sup>nd</sup>: Martin Ludgate, nb *Fulbourne*

3<sup>rd</sup>: Mr de Silva, nb *Renaissance*

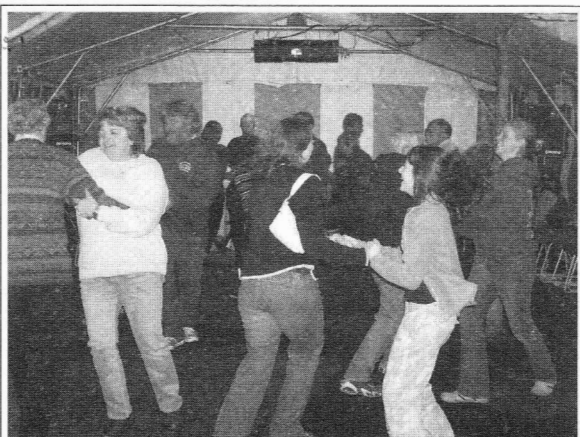
THE ROGER SQUIRES TROPHY for the best first-time entrant in the boat-handling competition:

George Eycott, nb *Opportunity*

THE VIC TROTT MEMORIAL TROPHY for the best "Boaters' Sunday Best" costumes: Paul & Janine Strudwick of nb *Pajant*.

In addition, certificates were given to various members of the Tideway Adventurers group for completing qualifications. The Competent Crew certificate was given to Abigail Tugg, Colin Percival and Jessica Jarvis, and the Certificate in Community Boat Management to Stephen Byford and Paul Benn.

Mike Stevens



Boaters enjoying the Saturday evening Ceilidh.

PHOTO : Mike Stevens

# ROUTES AND BRANCHES : Region, Branch and navigation news



Despite appalling weather conditions over twenty members turned up to hear an illuminating talk given by Annie Chipchase (Environment Officer, N&E London Branch) as they walked around the Bow Back Rivers in April. The purpose of the walk was to outline the impact on the local environment of a successful Olympic bid. Did you know that plans include lowering the level of the towpaths and building new bridges? Annie subsequently led a similar walk on Sunday 18 July, during the Three Mills Rally (see pages 10 & 11).

*Howard Selina*

## **Branch & Region Committee changes**

Since our last issue we have been through the annual round of AGMs and elections. Two of our London Branches have changed their Chairs since this time last year.

In North & East London, Tim Lewis had already handed over the Chair to Marion Riley some months before the AGM. He has now been confirmed as Vice-Chair and Roger Wilkinson has been elected as Branch Secretary, a post he has held once before.

In South London, David Lewellyn stood down as Chairman at the AGM. He was a founder member of the Branch Committee in 1995 and had been its Chairman since 1997. He has now retired from the Branch Committee, and the AGM expressed the Branch's thanks to him for his service. He has been replaced as Branch Chairman by your

Editor, who in turn has been replaced as Branch Secretary by Lesley Pryde. Libby Bradshaw becomes the new Deputy Chairman.

At Region level, the only changes have been in these Branch Chair posts, and all the Region Officers have been re-appointed for a further year. There are a few vacancies on the Region Committee to which we should like to co-opt suitable volunteers.

The current composition of all our Region and Branch Committees is listed on page 2.

## **A load of rubbish?**

The Region's Planning & Navigation Committee, along with the Middlesex Branch Committee are taking interest in a proposal for a recycling depôt beside the canal at Old Oak Common Lane, Willesden Junction. This will be able to use road, rail or water transport. The use of the canal to transfer recyclable goods in this area makes a lot of sense, as it is on a 27-mile pound, so the barges will not be delayed by locks. The scheme is highly consistent with IWA's national policy for increasing the amount of freight carried by water, and is much friendlier to the environment than carrying the same goods by road.

This scheme, together with the "Waste by Water" scheme which is still undergoing feasibility studies on the Lee Navigation, and the recently-started gravel traffic between Denham and West Drayton mark, we hope, the beginnings of a revival of freight traffic on London's waterways.

## **BW London moves offices**

British Waterways London Region has moved out of the Toll Office at Little Venice to a new office adjacent to the arm leading to Paddington Basin. Their new address is :

1 Sheldon Square,  
Paddington Central,  
London W2 6TT.

'phone (020) 7985 7200

fax (020) 7985 7201

# FROM THE REGION CHAIRMAN :

## Roger Squires

The IWA has produced some new membership leaflets. This is all part of its campaign to increase its membership numbers significantly during 2004. Membership numbers count in many ways, especially in relation to campaigning. The stronger the base, the more our voice is heard and noted.

Recently the National Chairman, John Fletcher, held an Advisory Group meeting to consider future campaign priorities. Three issues headed the list.

One was the future funding of the waterways. No doubt you have all heard of the recent substantial reduction by DEFRA of the Grant they provide to British Waterways. The immediate effect has been a 1 in 3 staff reduction exercise. Many have expressed concerns that considerable and valuable experience is being shed by this action and that the ability of BW to service the waterways network will be substantially impaired.

The Environment Agency, similarly, is having a financial crisis in that they need an additional £10million a year, over the next three years, if they are to be able to address their maintenance backlog.

The warning signs are there. We need to start to consider how best we can organise a national campaign to get these deficiencies addressed.

We also need to worry about the various Tranche 2 Restoration Schemes, many of which are having funding difficulties. Two immediately come to mind. One is the Cotswolds Canal, where Heritage Lottery Funding is now reduced to a quarter of the original bid. This means that the timetable will have to be extended yet again.

Another scheme is the Bedford to Milton Keynes Link. This offers the prospect of a new broad gauge link from the Ouse River system to the Grand Union Canal. Considerable time and effort has gone into this scheme to date. It now looks as if funding problems might mean a major opportunity is to be missed.

Nationally, we have got to work out exactly how best we can redress these financial difficulties. However, with the prospect of a General Election coming up next year, perhaps now is the time for all of us to start to lobby prospective candidates? Your individual letters will count!

The second theme was '*Protecting our Waterways Heritage*'. Over the past few years there has been a steady, but almost unnoticed, loss of key waterway features. Warehouses have been knocked down. Lock furniture has been removed, smaller structures, like lengthmen's huts and stop plank sheds, also have disappeared.

This erosion of our waterways heritage simply must not be allowed to continue. Otherwise we will not have the opportunity of showing the next generation how the waterways were worked and what the system was like. It has been suggested that IWA Branches should start to identify and make an inventory of historic buildings and waterway artefacts in their own areas, so that these may be safeguarded. Likewise, it has been proposed that Head Office might put together a web-based national database.

This all will take time and effort, but needs individual members' support and inputs.

The third theme was 'Waterways for all', identifying ways in which the socially disadvantaged might be able to gain a greater understanding of our waterways.

Former IWA National Chairman, Audrey Smith, who is also a member of IWAAC, was the author of their recent report on 'Social Inclusion'. It has been suggested that this report offers useful guidelines as to how the issues might be tackled. Here again, individual members of IWA can use their skills and play a part in helping us to take this forward. It now is down to you. Please help us action the IWA 'CAMPAIGNS'.

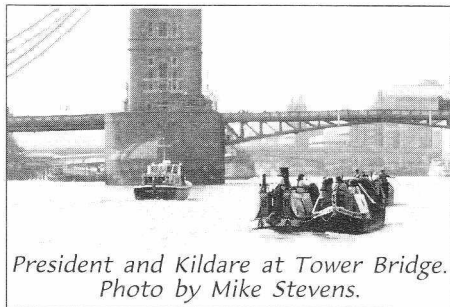
# ON THE METREAU : news and gossip of London's waterways

## **President visits London**

The steamer *President* and her butty *Kildare* made good use of their first visit to London since 1996. The original invitation to them came from Canalway Cavalcade, so they arrived the day before that event started and took a full part in it, with the new engine on public view whenever they weren't taking part in one of the various parades of boats.

Then they moved on to be guest exhibits at the London Canal Museum for the following week.

On Monday 10<sup>th</sup> May they set off from the Museum down the Regent's Canal for a rendezvous in Limehouse Basin with a flotilla of about a dozen narrowboats who were to escort them up the tideway to Brentford and back into the canal system. On the tideway we were joined by the Maritime Volunteer Service's *Londinium I*.



*President and Kildare at Tower Bridge.*  
Photo by Mike Stevens.

It was 2:30pm when the first group of boats locked out of Limehouse, and exactly 4pm as we passed Parliament.

The weather was very kind to us and we had a beautiful run to Brentford. After a brief stop there, most of us carried on as far as the foot of Hanwell locks, where *President & Kildare* were the last to arrive. Only the earliest of our group were in time for the hoped-for pub meal, but the rest of us were well-content when we found a Thai restaurant a little further off.

## **South London's travels**

South London Branch has been getting about a bit this Summer. We organised

the cruise accompanying *President* on the tideway, and another tideway cruise (this time of 16 boats) following the Three Mills Rally. Libby Bradshaw was the organiser of both of these (although she missed the earlier one because of illness), and Roger Squires arranged the lockings and gave the skippers' briefings on both occasions. Thanks to both of them for their hard work.

In June some of us spent a very sunny Sunday with our Branch Stand at the Teddington River Festival, celebrating the centenary of Teddington Barge Lock.



*The South London Branch stand at Teddington.*

Photo by Mike Stevens

The Festival was extremely well-attended and we were very well-positioned on the towpath beside the lock. The stand took a lot of money, and many IWA membership forms were taken by visitors.

We've made a practice in recent years of finishing our season of social meetings with a visit, and this year the choice fell on the fairly-recently-opened Museum in Docklands, where a number of us gathered on a filthy evening when the top of Canary Wharf tower was hidden in the clouds. An evening visit of a couple of hours wasn't enough to do justice to this splendid museum, and several of us vowed to come back and spend a whole day there.

## **On the transfer list?**

On all these South London Branch away-days, we were pleased to welcome a prominent member of Middlesex Branch, who even ended up helping staff our stand at Teddington. Are you looking for a free transfer, Robin?

# R.I.P.

## MIKE WEST

We are very saddened to report that former IWA Council member Mike West died in hospital on 23rd January, following a short illness. Mike was a very long-standing IWA member, for most of the time in the London area. He became first Secretary and later Chairman of the (old) South East Region.

In the latter capacity he became a member of IWA Council, on which he was to serve in various capacities for 26 years, including terms of office as national vice-chairman and national treasurer. He retired from Council in October last year, and was awarded honorary life membership of the Association, as was his wife Marian who also had a long track-record of service to IWA.

A few years ago, Mike and Marian retired to live in Braunston.

## BILL BARBER

It's probably only a small minority of our readers who actually knew Bill Barber personally, but he was a very influential figure among Thames enthusiasts.

A retired aircraft engineer, Bill did his boating in a cruiser which he based at Twickenham Yacht Club. He was a very active member of the River Thames Society and of local amenity groups in Putney, where he lived. For some years he was Chairman of the River User Amenity Group no.9, a forum for leisure users of the Thames between Teddington and London Bridge.

He died, following a stroke, in June.

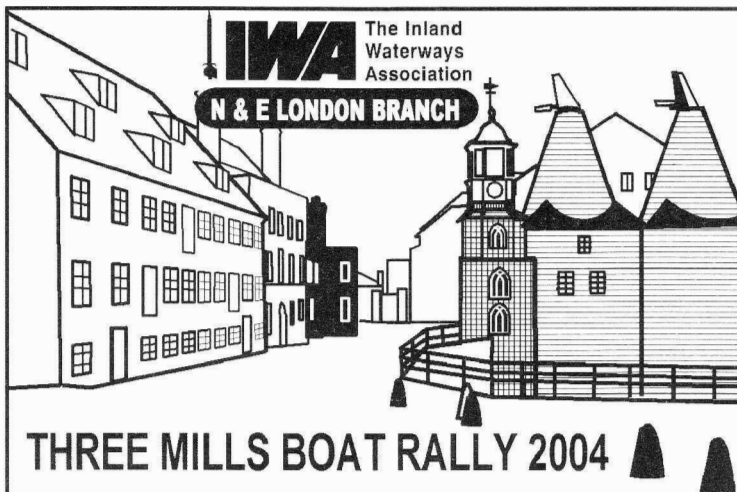
## PETER ROBERTS

Peter was been known to many of our readers as a regular attender at our Central London Socials, and to some of you as one of the regular guides on our towpath walks. He was taken ill just before Christmas with what was diagnosed as a cancer of the throat and which proved inoperable. He died at the age of 57 in a hospice on 11 May, having been active until a few days previously.

I'd known Peter for over twenty years, through both IWA and what used to be the Thames Barge Sailing Club (now the Thames Sailing Barge Trust) where he was both a regular crew member in the summer but also a regular worker at the winter working parties that restore their barges.

Those of you with particularly long memories may recall the excellent beer tent at the 1980 "National" at Walthamstow. That was run by the combined London branches of the Campaign for Real Ale, under Peter's leadership. Peter's membership of CAMRA was so long-standing that he remembered when it was called the Sociaty for the Preservation of Beer from the Wood.

The canals, sailing barges and CAMRA were just some of the many things in which Peter took an active interest. His home town of Upminster, his county of Essex and its Cricket Club were all among his active interests, as were the Scout movement, folk music, the Ramblers' Association and amateur drama. His brother, Bernard, pointed out at Peter's funeral that whatever Peter did, he always studied it fully, and while there were plenty of people who knew more about any one of Peter's interests than he did, there probably wasn't anybody else who knew even half that Peter did about the whole lot.



## ***Recycling the Water Way***

Building on the success of previous years, this year's Three Mills Boat Rally saw a wide range of water and land-based activities for visitors of all ages and interests. The sixth consecutive annual festival took place in the middle of July and, despite not having the best of weather conditions, was a triumph. The Mill House was again open all weekend and short boat trips were run for the public. Almost 40 boats joined us for the event - including a handful of Dutch barges.

A very exciting series of marquee events and entertainment was organised this year. In addition to a varied mix of information, food, trade and craft stalls and street entertainment, thanks to an *Awards for All* grant, we were able to book a comprehensive line up of events. Our Social Secretary was kept on the run all weekend looking after the entertainers - dealing with requests that ranged from refreshments via babysitting to hair accessories.

The circus show was extremely funny - and incorporated lots of tension when there was a real possibility they were about to burn down the marquee during the fire juggling routine. The circus skills workshop had a large group of enthusiastic participants, though somewhat captive as a result of a torrential downpour. Over the two days we heard music from three different

bands, children were enchanted by two storytellers and there were lots of different art and craft projects. One group of craft artists were enjoying themselves so much that they moved camp onto the green and carried on working until the end of the day - at no extra charge!

In addition to these events, Mudchute Farm set up 'animal corner'. Families were captivated by the small animals - including a family of small ducklings. Funnily enough, no-one was too keen on stroking the Llamas, who seemed to be keeping a wary eye on everyone who went past. The children seemed to be delighted by the range of animals they could pick up and cuddle.

The boaters' quiz on the Friday night was well attended (anything to do with the unplugging of the real ale?). As usual there was much debate from the losing teams about the validity of the answers. The Theme of 'Recycling the Water Way' won Dunkley's Folly (from Lee & Stort Branch) the trophy for best decorated boat - presented by Cathy Russell.

On the Saturday night, in between sets from the band, the illuminated boat competition took place. Despite some extremely funny competition (such as mini rubber ducks lit up by flashing bicycle lights), Amethyst (from Amersham) won, by not only lighting



up their boat but also all the people on board.

A waterway walk took place on both days of the weekend - regardless of the weather conditions. In fact, some of the people attending the Olympics Bid walk were attending for a second time to get an update on recent events.

The three cruises that took place over the weekend (around the Channelsea River and Mill Pool, down Bow Creek to Lighthouse Point and around the Bow Back Rivers) were, as ever, a great success. Thanks to all the boaters who invited crew onto their boats.

The only factor we had no control over for the weekend was the weather. I have to admit, we threw in the towel on the second day and Tim Lewis dashed off to buy a gazebo for the Branch stall. This of course was the signal for the sun to come out and we finished with a glorious day. We only wish we'd thought of it the day before.....

Thanks to all the members of the Branch (and one from Lee & Stort!) who spent time on the Branch stall - initially in the most appalling of conditions. It was also a real pleasure to meet so many Branch members who'd joined us for the event and came to say hello.

This year's Three Mills Boat Rally was again supported by Lee Valley Regional Park Authority. We are extremely indebted to them. Not only do they provide the venue for this event, but they also lay on additional entertainment linked to the theme of the Rally.

Thanks to all the members of the Branch who worked so hard to make the event such a success. In addition, N&E London Branch would like to thank Libby Bradshaw and Mike Stevens from South London Branch who gave us the practical benefit of their experience for this year's Rally.

Marion Riley



The main behind-the-scenes activity in recent months has been the beginnings of the refurbishment of the first floor gallery. The floor has been resurfaced and the first of our new exhibits has been created.

This is *Horse Power*, an exhibition about working horses in London, both on the canals and on the streets. It centres on a reproduction of a stall like the ones that once filled the stables on the first floor of our building. This replaces an older exhibit, in a different part of the space.

Alongside the work for this, our work to improve our accessibility to disabled people has continued.

During the winter and spring we took part in a very successful education project, the *Creative Canals Project*, in partnership with the Science Museum, the Ragged School Museum and Beauchamp Lodge Settlement's floating classroom, *Beauchamp*. The project was Government funded, and we await a decision on some follow-up funding.

On 22<sup>nd</sup> July we were honoured to receive a visit from our Patron, the Princess Royal, whom we showed all these new developments.

Mike Stevens



Part of the refurbished first floor gallery.

Photo by Mike Stevens

# IWA London Region 200 Club

The club was formed some years ago to help fund the running of the Region, so that other sources of income could be devoted more fully to campaigning and donations to waterways causes. At the moment the Club is well below its target of 200 members. If you've not yet joined, why not do so now? If you are a member, you can always take out an extra membership or two!

Members of the Club must be IWA members aged 18 or over. The annual subscription to the club is £12, payable by annual cheque or standing order (either for £12 annually or £1 monthly). A member may hold more than one membership of the Club. Prizes are awarded by a draw which takes place six times a year. When the club has its full quota of 200 members, each draw awards four prizes of £100, £50, £25, £25. When the Club has less than 200 members, prizes are reduced so that the ratio of prizes to subscriptions remains the same. The present officers of the Club are: Chairman: Mike Stevens (contact details on front cover); Secretary: Vernon Draper (address below); Treasurer: Tim Lewis (contact details on page 2) All queries should be addressed to Vernon Draper at the address at the foot of this page.

---

## MEMBERSHIP APPLICATION FORM

To the Officers,

I wish to become a member of the Inland Waterways Association London Region 200 Club. I have completed and enclose the standing order / enclose a cheque as payment for ..... membership(s) at £12 each.

Full name .....

Address .....

Postcode .....

Phone ..... email.....

I am a member of the Inland Waterways Association and I agree to be bound by the rules of the London Region 200 Club.

Signed..... Date.....

Cheques should be made payable to "IWA London Region 200 Club"

---

## STANDING ORDER MANDATE

To : The Manager ..... Bank/Building Society

Address.....

Postcode .....

Please pay to Barclays Bank plc Kettering Branch, Sort code 20-45-77 for the credit of the Inland Waterways Association London Region 200 Club Account no. 80204234, quoting reference .....(\*) as follows : {(\*) will be inserted by Officers when processing.}

(ANNUAL OPTION) the sum of £..... (..... pounds only) with immediate effect and on the first day of ..... (\*) each year thereafter until further notice from me.

OR

(MONTHLY OPTION) the sum of £..... (..... pounds only) with immediate effect and on the first day of each month thereafter until further notice from me.

Please debit my account in the name of .....

Account no ....., accordingly.

Signature ..... Date .....

The two halves of the form should be sent to Vernon Draper at 12 Chipperfield Close, New Bradwell, MILTON KEYNES, Buckinghamshire MK13 0EP

# Waterways events in and around London.

See back page for details of venues and contacts for further information.

For up-dates to this list, watch the Diary page on the Region web site  
at [www.waterways.org.uk/london.htm](http://www.waterways.org.uk/london.htm)

Please note that all activities listed are open to the public.

Continuing until further notice LONDON CANAL MUSEUM. Temporary  
Exhibition - *Ruislip Lido*.

## AUGUST 2004

- Sunday 15<sup>th</sup> 2.30pm LONDON IWA with *THE ORIGINAL LONDON WALKS*. GUIDED TOWPATH WALK. The Regent's Canal. King's Cross to Camden Town. Meet at King's Cross station, by the taxi rank.
- Tuesday 17<sup>th</sup> all day LONDON CANAL MUSEUM. Children's activities, including 'Castles and Flowers' painting, Canal boat trips and 'Where's Charlie? Trail'. 10.30am to 12 noon, then 1.30pm to 3pm. (£2.00 per child).
- Tuesday 24<sup>th</sup> all day LONDON CANAL MUSEUM. Children's activities, including 'Castles and Flowers' painting, Canal boat trips and 'Where's Charlie? Trail'. 10.30am to 12 noon, then 1.30pm to 3pm. (£2.00 per child).
- Tuesday 24<sup>th</sup> 6.30pm LONDON IWA with *THE ORIGINAL LONDON WALKS*. GUIDED TOWPATH WALK. The Regent's Canal. King's Cross to Camden Town. Meet at King's Cross station, by the taxi rank.).
- Saturday 28<sup>th</sup> all day IWA NORTH & EAST LONDON BRANCH. Coach trip to the IWA "National" at Burton-on-Trent. Pick up from Spring Lee Cruising Club. Other pick up points can be arranged.

## SEPTEMBER 2004

- Thursday 2<sup>nd</sup> 7.30pm LONDON CANAL MUSEUM ILLUSTRATED TALK. *Sources of London's Public Water Supplies* by Ron Howes.
- Sunday 5<sup>th</sup> 11.30am-5pm ANGEL CANAL FESTIVAL on the Regent's Canal around City Road Lock and Basin, and Packington Park, London N.1. Contact: [angelfestival@canalmuseum.org.uk](mailto:angelfestival@canalmuseum.org.uk)
- Sunday 5<sup>th</sup> 2.30pm LONDON IWA with *THE ORIGINAL LONDON WALKS*. GUIDED TOWPATH WALK. The Regent's Canal. Islington to Mile End. Meet outside Angel tube station.
- Wednesday 8<sup>th</sup> 8pm IWA SOUTH LONDON BRANCH SOCIAL. *London's Lifeboats* by a speaker from the RNLI.
- Weekend 11<sup>th</sup>/12<sup>th</sup> SLOUGH CANAL FESTIVAL with IWA MIDDLESEX BRANCH and Slough Borough Council and *Friends of the Slough Canal*. Middlegreen Road, Langley, Slough, Berkshire. Contact: 01753 875557.
- Weekend 11<sup>th</sup>/12<sup>th</sup> LONDON WATERWAY RECOVERY GROUP. Dig (details to be arranged)
- Saturday 11<sup>th</sup> 13.15 THE GREAT RIVER RACE for traditional boats along the Thames from Riverside, Ham Street, Richmond, Surrey, to Greenwich, finishing at approx 16.30pm. Further information from: [www.greatriverrace.co.uk](http://www.greatriverrace.co.uk)
- Monday 13<sup>th</sup> 8pm IWA LEE & STORT BRANCH. *Red Watch Boat Project* by Ken Watson

- Tuesday 14<sup>th</sup> 8pm IWA MIDDLESEX BRANCH SOCIAL. *Pitfalls and Pleasures of Brokering Boats* by John Currer.
- Thursday 16<sup>th</sup> 8pm IWA LONDON REGION CENTRAL SOCIAL. *Burgundy and Water* by Colin Edwards.
- Sunday 19<sup>th</sup> all day IWA NORTH & EAST LONDON BRANCH. Coach trip and guided tour of Chelmer & Blackwater Navigation. Pick up from Spring Lee Cruising Club. Other pick up points can be arranged.
- Sunday 19<sup>th</sup> 2.30pm LONDON IWA with *THE ORIGINAL LONDON WALKS*. GUIDED TOWPATH WALK. The Regent's Canal. Islington to Mile End. Meet outside Angel tube station.
- Weekend 18<sup>th</sup>/19<sup>th</sup> all day MAYOR'S THAMES FESTIVAL, on and around the South Bank of the Thames, between Westminster and Southwark Bridges. 12 noon to 10pm on both days. For the programme of activities, go to: [www.thamesfestival.org.uk](http://www.thamesfestival.org.uk)
- Weekend 18<sup>th</sup>/19<sup>th</sup> all day LONDON OPEN HOUSE WEEKEND. The London Canal Museum, Kew Bridge Steam Museum, West India Dock Impounding Station and the Limehouse Accumulator Tower are among many venues taking part.
- Saturday 25<sup>th</sup> all day LONDON CANAL MUSEUM. 'Roses and Castles' painting workshop with Tricia Parrott. Suitable for all abilities. 10.30am to 4.30pm. £25 a head.
- Sunday 26<sup>th</sup> 2.30pm LONDON CANAL MUSEUM. Guided towpath walk from Museum to Camden Town, along the towpath of the Regent's Canal. Suggested donation of £4 or £5.

## OCTOBER 2004

- Weekend 2<sup>nd</sup>/3<sup>rd</sup> LONDON WATERWAY RECOVERY GROUP. Dig on the Hereford & Gloucester Canal.
- Sunday 3<sup>rd</sup> 2.30pm LONDON IWA with *THE ORIGINAL LONDON WALKS*. GUIDED TOWPATH WALK. Three Mills and the Bow Back Rivers. Meet at Bromley-by-Bow tube station.
- Wednesday 6<sup>th</sup> 8pm IWA SOUTH LONDON BRANCH SOCIAL. *The National Trust and the River Wey Navigation* by Denys Wood.
- Thursday 7<sup>th</sup> 7.30pm LONDON CANAL MUSEUM ILLUSTRATED TALK. *Thames Locks and Weirs* by Steve Capel Davis.
- Monday 11<sup>th</sup> 8pm IWA LEE & STORT BRANCH. *Waterway Wonders* by Richard Thomas
- Tuesday 12<sup>th</sup> 8pm IWA MIDDLESEX BRANCH SOCIAL. *Managing London's Waterways* by John Guest (British Waterways).
- Saturday 16<sup>th</sup> all day LONDON CANAL MUSEUM FAMILY ACTIVITY DAY as part of national Family Learning Week. Details to be arranged.
- Sunday 17<sup>th</sup> 2.30pm LONDON IWA with *THE ORIGINAL LONDON WALKS*. GUIDED TOWPATH WALK. The Regent's Canal. Little Venice to Camden Town. Meet at Warwick Avenue tube station.
- Thursday 21<sup>st</sup> 8pm IWA LONDON REGION CENTRAL SOCIAL. Speaker TBA.
- Weekend 23<sup>rd</sup>/24<sup>th</sup> LONDON WATERWAY RECOVERY GROUP. Dig on the Wilts & Berks Canal at Pewsham
- Saturday 30<sup>th</sup> all day St PANCRAS CRUISING CLUB. Spooky Cruise to Kensal Green Cemetery, leave St Pancras at 10am and return there for an 8pm Halloween Party. Bring your own food. Contact: Beryl Windsor on 0121 244 8439.

## NOVEMBER 2004

Wednesday 3 <sup>rd</sup> 8pm	IWA SOUTH LONDON BRANCH SOCIAL. <i>The Canals in Sussex</i> by Nick Kelly.
Thursday 4 <sup>th</sup> 7.30pm	LONDON CANAL MUSEUM ILLUSTRATED TALK. <i>The Bedford to Milton Keynes Link</i> by Paul Leech.
Weekend 6 <sup>th</sup> /7 <sup>th</sup>	LONDON WATERWAY RECOVERY GROUP. Bonfire Bash & Reunion.
Sunday 7 <sup>th</sup> 2.30pm	LONDON IWA with <i>THE ORIGINAL LONDON WALKS</i> . GUIDED TOWPATH WALK. The Regent's Canal. King's Cross to Camden Town. Meet at King's Cross station, by taxi rank.
Monday 8 <sup>th</sup> 8pm	IWA LEE & STORT BRANCH. <i>River Ouse</i> by Barry Mason
Tuesday 9 <sup>th</sup> 8pm	IWA MIDDLESEX BRANCH SOCIAL. Speaker TBA.
Wednesday 17 <sup>th</sup> 7.30pm	IWA NORTH & EAST LONDON BRANCH SOCIAL. <i>Introduction to Diesel Engine Mechanics</i> by Tony Brooks.
Thursday 18 <sup>th</sup> 8pm	IWA LONDON REGION CENTRAL SOCIAL. Speaker TBA.
Sunday 21 <sup>st</sup> 2.30pm	LONDON IWA with <i>THE ORIGINAL LONDON WALKS</i> . GUIDED TOWPATH WALK. The Regent's Canal. Mile End to Limehouse. Meet outside Mile End tube station.

## DECEMBER 2004

Thursday 2 <sup>nd</sup> from 6pm	LONDON CANAL MUSEUM CHRISTMAS SHOPPING in the Museum Shop with a glass of wine and a mince pie, and a Christmas discount on your purchases.
Thursday 2 <sup>nd</sup> 7:30pm	LONDON CANAL MUSEUM ILLUSTRATED TALK (at 7.30pm). <i>Canals before 1940 - Railway &amp; Canal Historical Society (RCHS) Collection</i> by Hugh Compton.
Weekend 4 <sup>th</sup> /5 <sup>th</sup>	LONDON WATERWAY RECOVERY GROUP. Christmas Party dig on the Wilts & Berks, jointly with KESCRG.
Sunday 5 <sup>th</sup> 2.30pm	LONDON IWA with <i>THE ORIGINAL LONDON WALKS</i> . The Regent's Canal. Little Venice to Camden Town. Meet at Warwick Avenue outside the tube station.
Thursday 9 <sup>th</sup> 8pm	IWA LONDON CENTRAL REGION SOCIAL. Waterways Quiz, and Auction. Venue to be confirmed
Friday 10 <sup>th</sup> 8pm	IWA SOUTH LONDON BRANCH. Christmas Dinner with Waterways Quiz. Venue to be arranged. Contact Lesley Pryde (07787 360957).
Monday 13 <sup>th</sup> 8pm	IWA LEE & STORT BRANCH. <i>BW Mooring Pilot</i> by Dawn Reid
Wednesday 15 <sup>th</sup> 7.30pm	IWA NORTH & EAST LONDON BRANCH. Christmas Social.
Sunday 19 <sup>th</sup> 2.30pm	LONDON IWA with <i>THE ORIGINAL LONDON WALKS</i> . GUIDED TOWPATH WALK. The Regent's Canal. King's Cross to Camden Town. Meet at King's Cross station, at the taxi rank.
Sunday 26 <sup>th</sup> 11am	LONDON IWA with <i>THE ORIGINAL LONDON WALKS</i> . GUIDED TOWPATH WALK. BOXING DAY CIRCULAR WALK of the Canals of Paddington. Meet at Paddington tube station, main Praed Street entrance.
Friday 31 <sup>st</sup> 11am	St PANCRAS CRUISING CLUB. ICICLE CRUISE, from St Pancras to Little Venice, with a barbecue lunch in Rembrandt Gardens and back again (approx. 5pm). Contact: David Pierce on 01489 895838.

# Venue details & contact people

<u>MEETING</u>	<u>VENUE</u>	<u>CONTACT</u>
IWA LONDON REGION CENTRAL LONDON SOCIAL	<i>The Lamb</i> Lamb's Conduit Street, WC1 (Nearest tube Russell Square)	Mike Stevens (see details on page 1)
IWA MIDDLESEX BRANCH	Hillingdon Canal Club, Uxbridge Wharf, Waterloo Rd, Uxbridge	Robin Bishop (020) 8452 2632
IWA NORTH & EAST LONDON BRANCH	Springfield Marina, Spring Hill, Clapton, London E5	Pete Nash (work) 0207 269 3401 email peter.nash@cancer.org.uk
IWA SOUTH LONDON BRANCH	East Croydon United Reformed Church Hall Addiscombe Grove, CR0 5LP (Close to East Croydon station)	Lesley Pryde (020) 8679 9866 email cookielesley@tinyworld.co.uk
LONDON IWA / LONDON WALKS TOWPATH WALKS	As listed. Each about 2 hours. £5.50 (concessions £4.50).	London Walks (020) 7624 3978
LONDON WATERWAY RECOVERY GROUP	Meeting point for digs is usually Waterloo Station 7 pm on Friday to travel to site.	Tim Lewis (020) 8367-6227 london@wrg.org.uk
LONDON CANAL MUSEUM	12 New Wharf Road, King's Cross, London, N1 9RT Opens Tues. to Sun, 10 am - 4:30 pm. Admission £2.50, concessions £1.25, Admission to talks £2.50, concessions £1.25..	(020) 7713 0836
IWA LEE & STORT BRANCH	<i>The New Inn</i> , Roydon	Barry Banyard 07860 669279

## "HOW TO GET THERE" MAPS

for the IWA Central London, South London Branch, N&E London Branch and  
Middlesex Branch venues can be found on the internet at  
[www.waterways.org.uk/branchandregion/londonregion/venues/index.htm](http://www.waterways.org.uk/branchandregion/londonregion/venues/index.htm)